

# INTERIORS®

JUNE 1989



*On your hotel TV  
24 hours continuously*

**ROSS ANDERSON OF  
ANDERSON/SCHWARTZ  
CREATES A CORPORATE  
CONFERENCE SCENARIO**

**THE BEST OF THIS  
YEAR'S LAW OFFICES**

**CHICAGO DESIGN:  
A NEW ATTITUDE**



## A GLOWING CONFERENCE

*An entire floor of elegantly detailed conference rooms in Sidley & Austin's Chicago office wins a conference room award for I S D.*

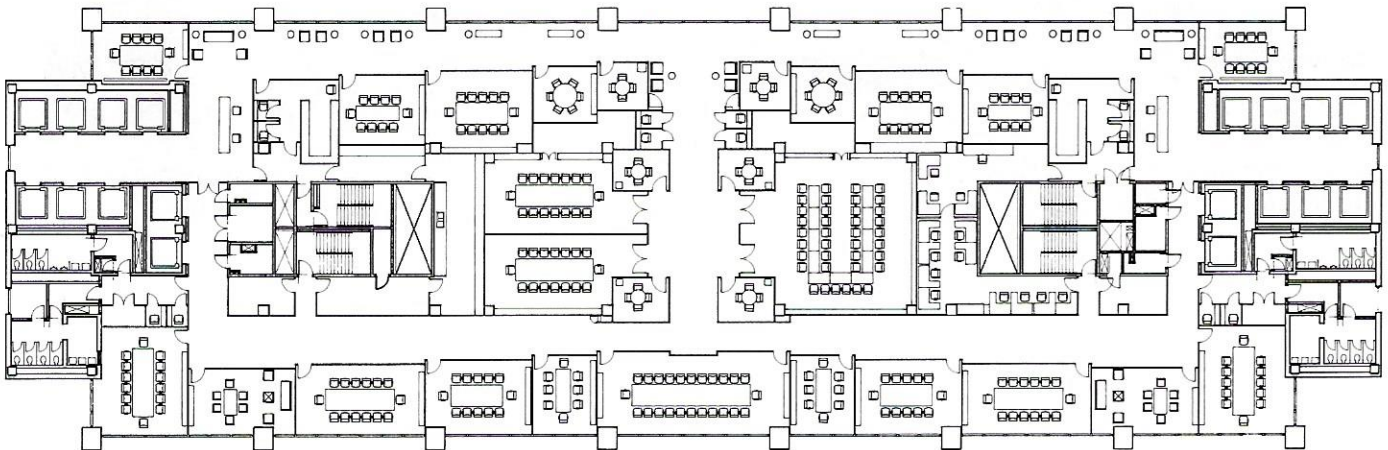
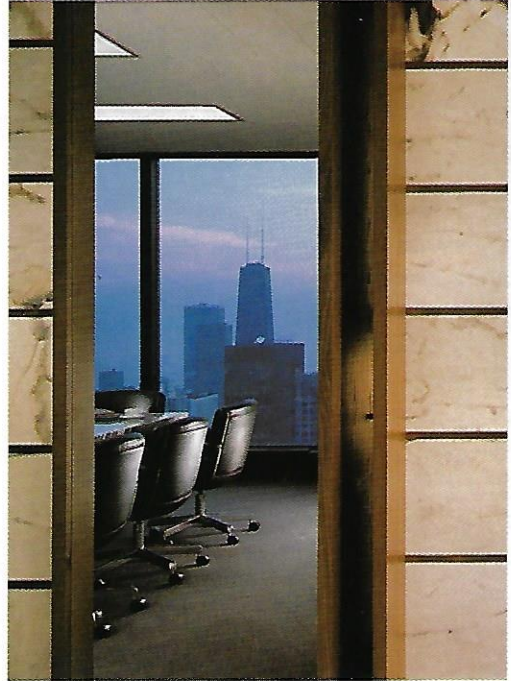
**A** special feature of the recently renovated offices of Chicago's largest law firm, Sidley & Austin by I S D, is a new conference center floor dedicated solely to conference, caucus rooms and support areas.

One of two winners in the Conference Room Category in the ABA Journal Competition, the floor has both southern and northern exposure, and access from both the east and west side of the building. On the sunny, south side, conference areas have been pulled off the perimeter, so that a long, light-filled corridor that looks out on the city skyline serves as a circulation and reception area. The most distinctive feature of the space is a gridded marble wall that runs along the other side of the corridor. Made of  $\frac{3}{8}$ -inch Calacutto marble used for windows in ancient Greece, the translucent wall glows with the light reflected off the south facing glass curtain wall. French white ash doors and panelling, white walls and modernist furniture create an elegantly detailed space. ●

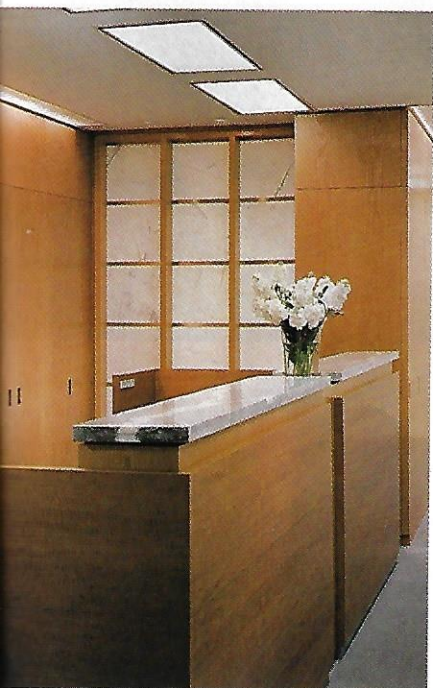
*Nayana Currimbhoy*

**Opposite:** A translucent Calacutto marble feature wall glows with reflected daylight from the light-filled corridor. **Right:** Throughout the space, French white ash panelling and doors accented with Anigre veneer are complemented with Modernist furniture. **Below:** Plan shows the 25,000-square-foot floor—one of twelve floors renovated by ISD—which contains 28 conference and caucus rooms. **Facing page, bottom left:** Travertine floor and a Fior de Pesco marble and wood desk make up a typical reception area.

Table *Spectrum Stone*,  
Woodwork *Corporation of America*  
Seating *Steelcase*  
Stow & Davis Upholstery  
Spinneybeck Carpet  
Lees Commercial Carpet Company  
Ceiling *United States Gypsum*  
Hardware *Sargeant*







**Right: Large caucus rooms on the floor offer facilities for a variety of meetings and luncheons. The Calacutto marble wall allows for visual as well as acoustical privacy.**

Lounge seating *Palazzetti*  
 Upholstery *Spinneybeck*  
 Lounge table *Brickel Bench*  
*Interior Crafts*, at Table *Stendig*  
 Carpet *Lees Commercial*  
 Carpet Company Ceiling  
*United States Gypsum* Lighting  
*Lightolier* Desk, wall finish,  
 conference table *Spectrum*  
*Stone*, *Wood-work Corporation*  
 of America Table seating  
*Interior Crafts* Table seating  
 upholstery *Carnegie*

